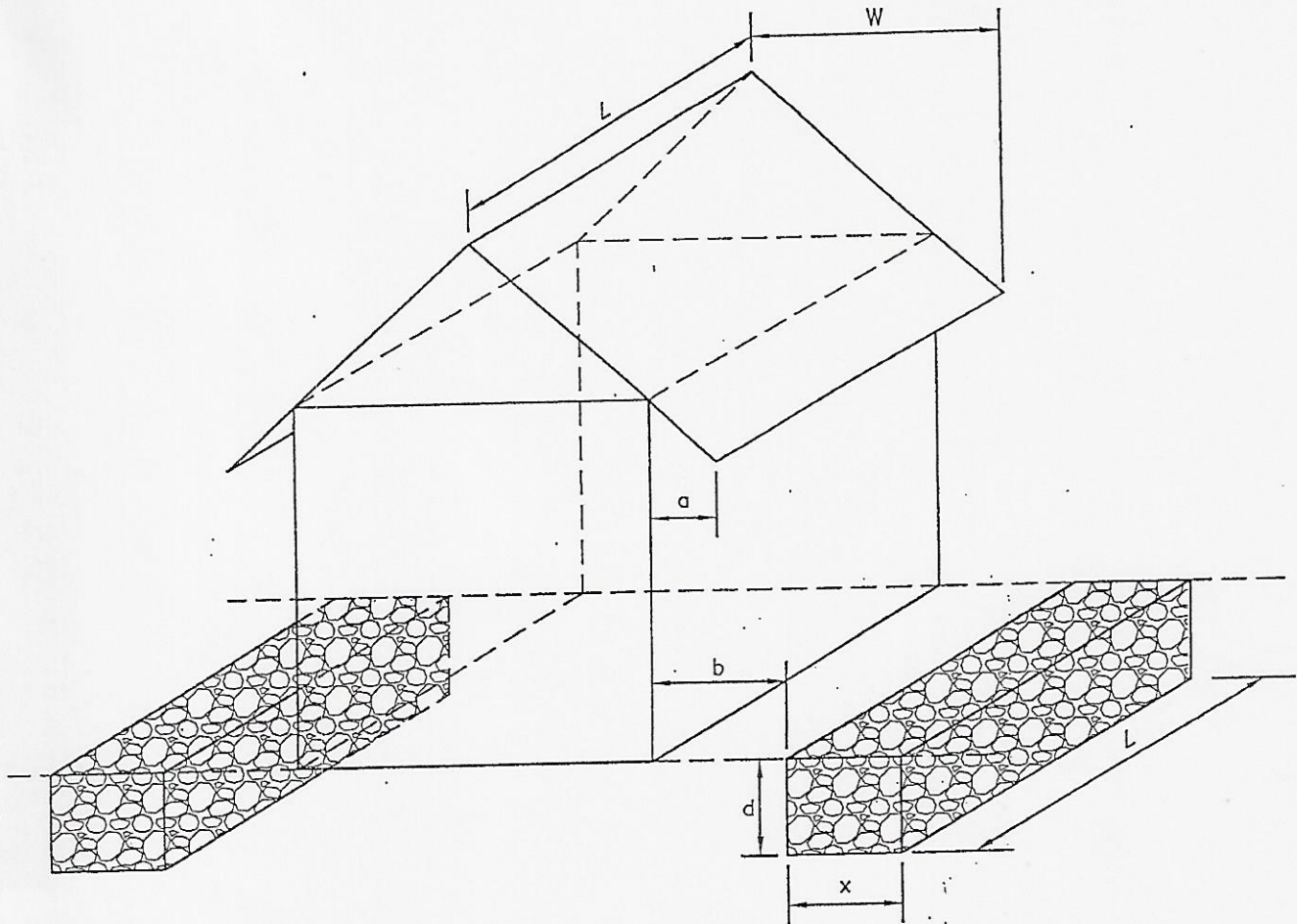


K:\096590800\dwg\096590800\_A.dwg, 11/16/2011 12:18:06 PM



**KEY**

- L = LENGTH OF STRUCTURE ROOF = LENGTH OF SEEPAGE TRENCH (FT.)
- W = WIDTH OF ONE SIDE OF THE ROOF (FT.)
- a = EAVE OVERHANG (FT)
- b = DISTANCE FROM STRUCTURE WALL TO SEEPAGE TRENCH (FT)
- = a + 1 FT => PLACE EDGE OF TRENCH ONE FOOT PAST EAVES
- x = WIDTH OF SEEPAGE TRENCH (FT)
- d = DEPTH OF SEEPAGE TRENCH (FT)

REQUIRED VOLUME OF TRENCH =>  $L*W*2/12 = L*x*d*0.4 \Rightarrow X=0.28W$  (d=1.5')

RATIO: 3.6 TO 1  
(IMPERVIOUS TO INFILTRATION)

**NOTES**

- 1.) TRENCH MUST BE PROVIDED ON EACH SIDE OF STRUCTURE.
- 2.) SIDE AND BOTTOM OF TRENCH TO BE WRAPPED IN CLASS 1 GEOTEXTILE.
- 3.) TRENCH TO BE FILLED WITH CLEAN STONE (3/4" MIN. SIZE).
- 4.) TRENCH TO BE CONSTRUCTED AT 0% SLOPE ON UNDISTURBED SOIL.
- 5.) TRENCH TO BE CHECKED REGULARLY TO MAINTAIN PROPER OPERATION.
- 6.) TRENCH SHALL BE SETBACK AT LEAST 10' FROM PROPERTY LINE.

**MANCHESTER BOROUGH**

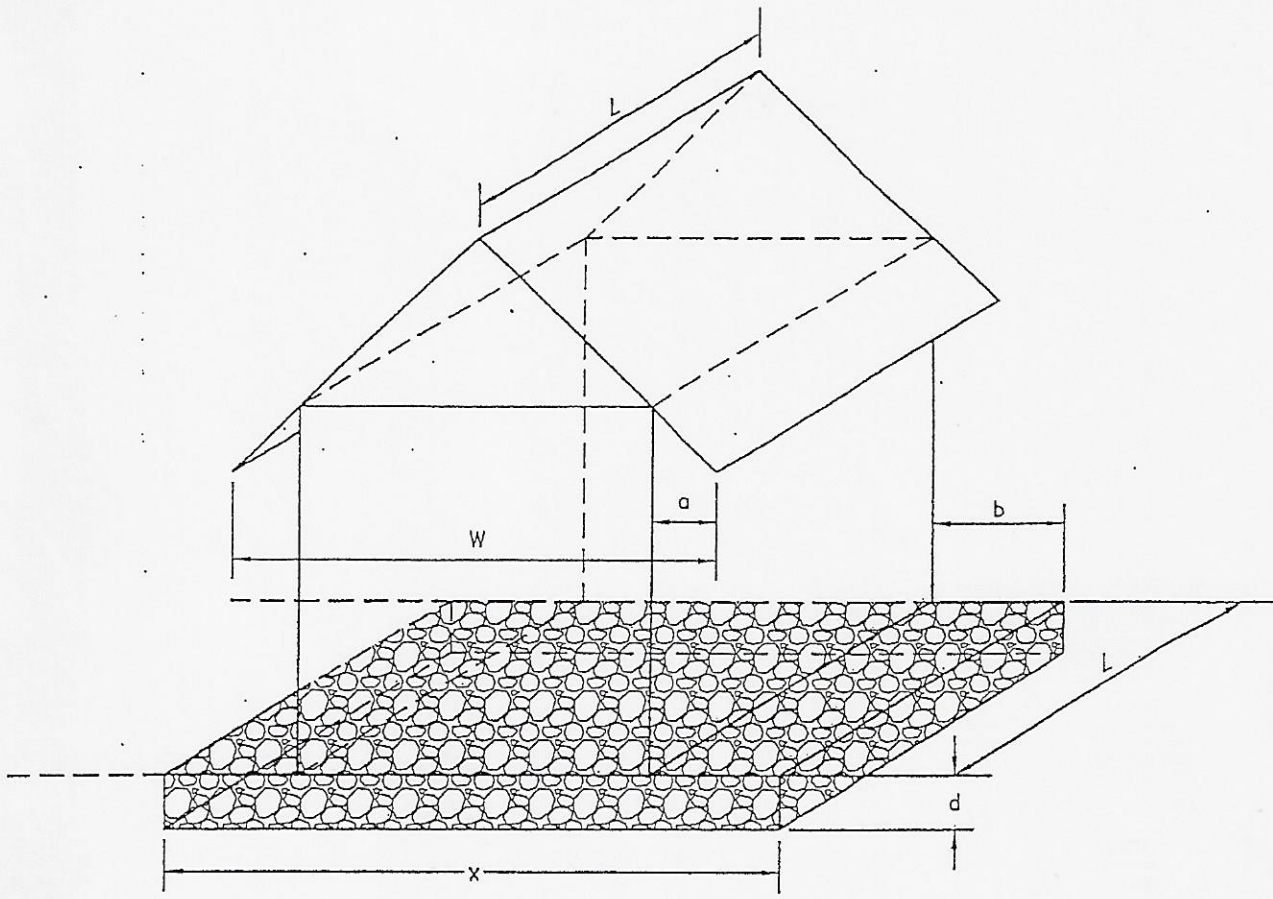


38 N. DUKE STREET YORK, PA • PHONE (717) 848-4805 • FAX (717) 848-5811  
 50 WEST MIDDLE ST. GETTYSBURG, PA • PHONE (717) 337-3021 • FAX (717) 337-0782  
 315 W. JAMES ST., SUITE 102 LANCASTER, PA • PHONE (717) 481-2991 • FAX (717) 481-8690  
 WWW.CSDAVIDSON.COM

ATTACHMENT B1  
 STORMWATER MANAGEMENT  
 SAMPLE  
 STRUCTURES WITHOUT GUTTERS A

MANCHESTER BOROUGH YORK COUNTY, PENNSYLVANIA

DRAWN BY	APS
CHECKED BY	
SCALE	N.T.S.
DATE	OCTOBER 2011
DWG. NO.	096590800_A
FILE NO.	0965.9.08.00



**KEY**

- L = LENGTH OF STRUCTURE ROOF = LENGTH OF SEEPAGE BED (FT.)
- W = WIDTH OF ENTIRE ROOF (FT)
- a = EAVE OVERHANG (FT)
- b = DISTANCE FROM STRUCTURE WALL TO SEEPAGE BED (FT)
- = a + 1 FT => PLACE EDGE OF BED ONE FOOT PAST EAVES
- x = WIDTH OF SEEPAGE TRENCH (FT)
- x = W + 2 FT
- d = DEPTH OF SEEPAGE TRENCH (FT)
- d = 6" TO 8" (AVERAGE)

**NOTES**

- 1.) BED TO BE WRAPPED IN CLASS 1 GEOTEXTILE.
- 2.) BED TO BE FILLED WITH CLEAN STONE.
- 3.) BED TO BE CONSTRUCTED AT 0% SLOPE ON UNDISTURBED SOIL.
- 4.) BED TO BE CHECKED REGULARLY TO MAINTAIN PROPER OPERATION.

**SAMPLE MUNICIPALITY**



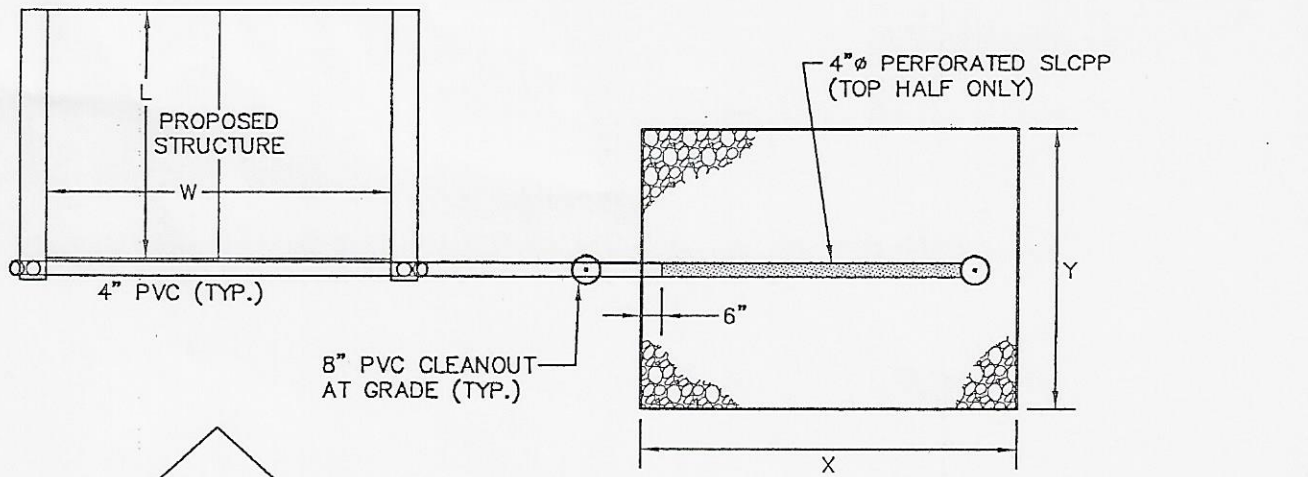
*Excellence in Civil Engineering*

38 N. DUKE STREET YORK, PA • PHONE (717) 846-4805 • FAX (717) 846-5811  
 50 WEST MIDDLE ST. GETTYSBURG, PA • PHONE (717) 337-3021 • FAX (717) 337-0782  
 315 N. JAMES ST., SUITE 102 LANCASTER, PA • PHONE (717) 481-2991 • FAX (717) 481-8690  
 WWW.CSDAVIDSON.COM

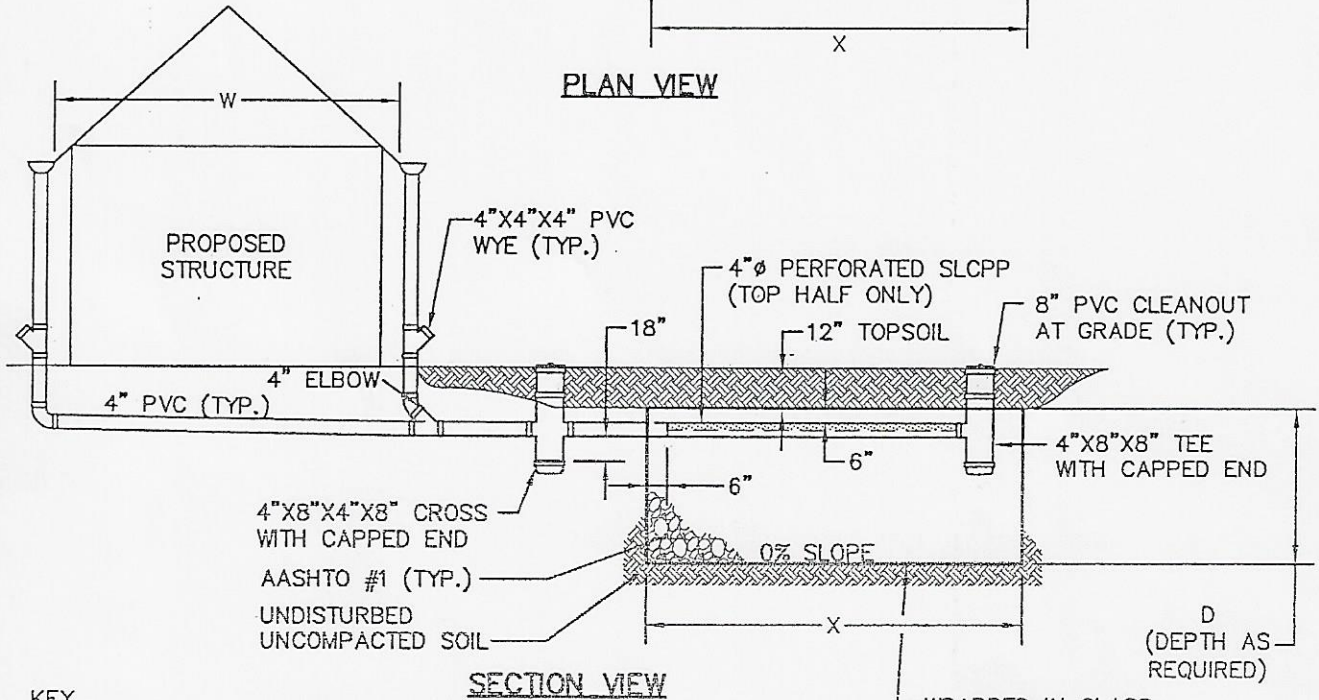
ATTACHMENT B2  
 STORMWATER MANAGEMENT  
 SAMPLE  
 STRUCTURES WITHOUT GUTTERS B

MUNICIPALITY YORK COUNTY, PENNSYLVANIA

DRAWN BY	APS
CHECKED BY	
SCALE	N.T.S.
DATE	OCTOBER 2011
DWG. NO.	ORDINANCE EXHIBITS
FILE NO.	



PLAN VIEW



SECTION VIEW

KEY

- L = LENGTH OF STRUCTURE ROOF (FT)
- W = WIDTH OF ENTIRE ROOF (FT)
- X = WIDTH OF INFILTRATION BED (FT)
- Y = LENGTH OF INFILTRATION BED (FT)

REQUIRED VOLUME OF BED =  $L*W*2/12 = X*Y*D*0.4$  ASSUME:  $X=W$   
 $D=2'$

$Y=0.21L$

RATIO: 4.76 TO 1  
 (IMPERVIOUS TO INFILTRATION)

NOTES

- 1.) BOTTOM OF BED TO BE D+1' BELOW GRADE TO ACCOUNT FOR 1' OF TOPSOIL.
- 2.) PIPING AND CLEANOUTS TO BE CENTERED WITHIN INFILTRATION BED.
- 3.) BED TO BE CHECKED REGULARLY TO MAINTAIN PROPER OPERATION.
- 4.) BED SHALL BE SETBACK AT LEAST 10' FROM PROPERTY LINE.

MANCHESTER BOROUGH



38 N. LAKE STREET YORK, PA • PHONE (717) 846-6605 • FAX (717) 846-5811  
 55 WEST LEBANON ST. GETTYSBURG, PA • PHONE (717) 337-3822 • FAX (717) 337-0788  
 154 W. LEBANON ST. YORK, PA • PHONE (717) 846-2888 • FAX (717) 846-6605  
 WWW.CSDAVIDSON.COM

ATTACHMENT B3  
 STORMWATER MANAGEMENT  
 SAMPLE  
 STRUCTURES WITH GUTTERS

DRAWN BY	APS
CHECKED BY	
SCALE	NONE
DATE	OCTOBER 2011
UNFILED NO.	UNDESIGNED A
FILE NO.	0585.0.05.00

C:\Users\jacob\Documents\10111011.dwg, 11/16/2011 12:18:16 PM